

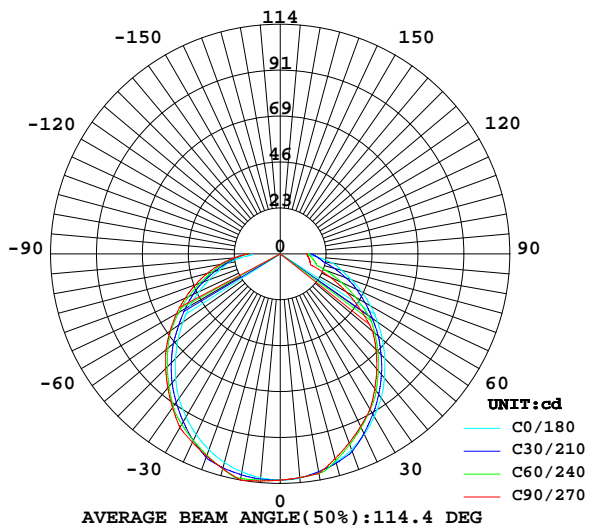
LUMINAIRE PHOTOMETRIC TEST REPORT

Report number:

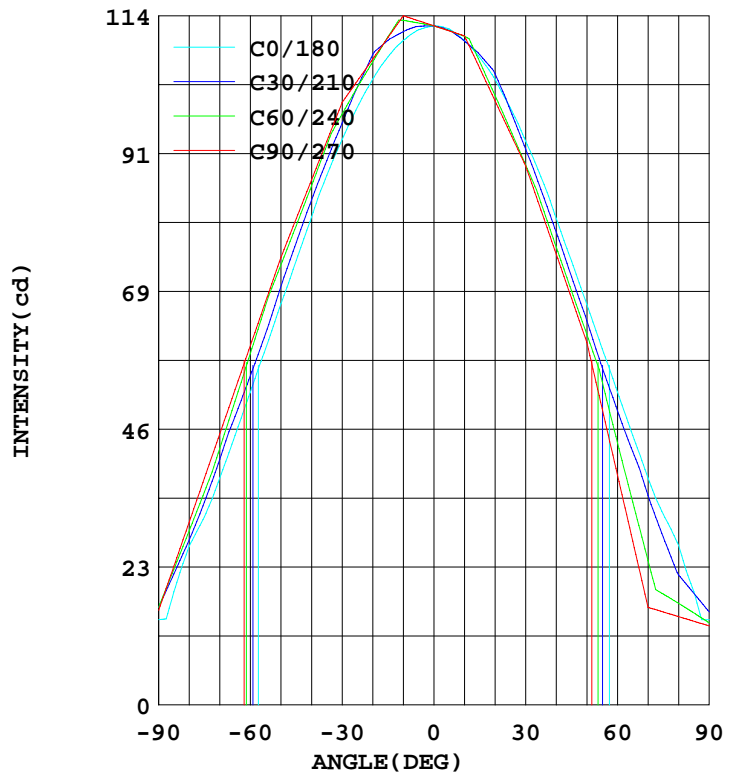
MANUFACTURER:	Address:	
NAME: 550111	TYPE:	WEIGHT:
SPECIFICATION:	DIMENSION:	SERIAL No.:

DATA OF LAMP		I _{max} (cd)	114.2	S/MH(C0/180)	1.24
MODEL		EFFICIENCY(%)	100.0	S/MH(C90/270)	1.31
NOMINAL POWER(W)	7	TOTAL FLUX(lm)	346.24	Voltage(V)	220.6
RATED VOLTAGE(V)	220	EFFICIENCY(lm/W)	50.2	Current(A)	0.062
NOMINAL FLUX(lm)	346.2	η up(%)	0.0	Power(W)	6.900
LAMPS QUANTITY	1	η down(%)	100.0	Power Factor(PF)	0.505
TEST VOLTAGE(V)	220.7	Effective Flux(lm)	346.2	EEI	0.207

LUMINOUS INTENSITY DISTRIBUTION



LUMINOUS INTENSITY DISTRIBUTION



Test System:HOP00 HPG1900
Temperature:25.3DEG
Operators:
Test Date:2020年11月07日

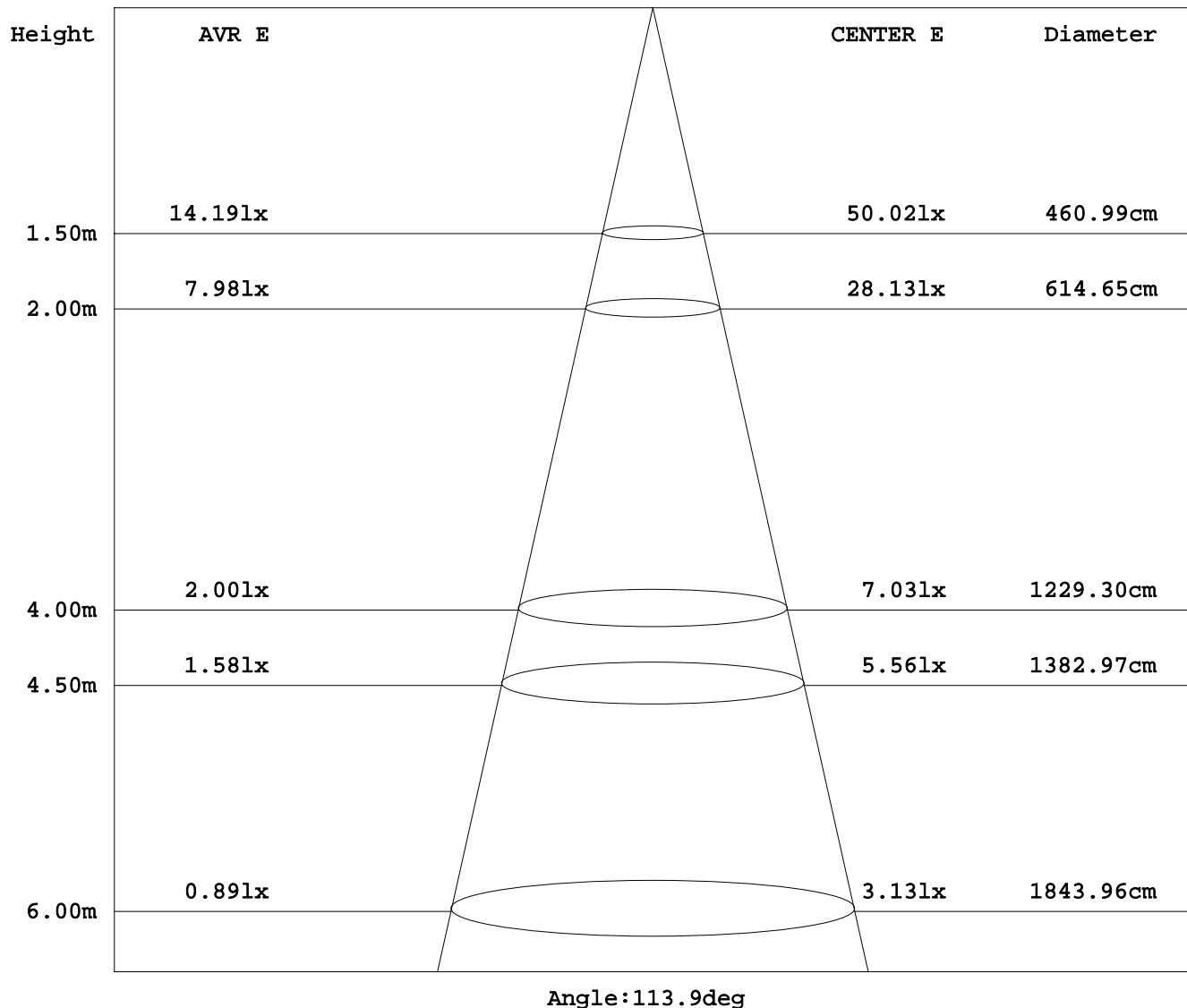
Test Set: 5.0deg/s B-Beta (TYPE B)
Humidity:65.0%
Test Distance:16.020 m
Remarks:

HONGPU GONIOPHOTOMETERS SYSTEM TEST REPORT

AVERAGE AND CENTER E Figure

Report number:

MANUFACTURER:	Address:	
NAME: LXD0940-7	TYPE:	WEIGHT:
SPECIFICATION:	DIMENSION:	SERIAL No.:



Test System: HOPOO HPG1900
 Temperature: 25.3DEG
 Operators:
 Test Date: 2020年11月07日

Test Set: 5.0deg/s B-Beta (TYPE B)
 Humidity: 65.0%
 Test Distance: 16.020 m
 Remarks:

HONGPU GONIOPHOTOMETERS SYSTEM TEST REPORT

ZONAL FLUX DIAGRAM

Report number:

MANUFACTURER:	Address:	
NAME: LXD0940-7	TYPE:	WEIGHT:
SPECIFICATION:	DIMENSION:	SERIAL No.:

γ	C0	C45	C90	C135	C180	C225	C270	C315	γ	Φ zone	Φ total
5.0	111.8	112.7	113.3	112.7	112.0	111.7	111.7	111.5	0- 5	2.686	2.686
10.0	110.0	112.5	114.2	112.2	110.0	110.3	110.8	109.9	5- 10	7.994	10.68
15.0	107.4	111.1	110.6	110.5	107.2	107.8	105.4	107.2	10- 15	13.03	23.71
20.0	103.6	106.7	107.0	106.1	103.6	102.2	100.0	101.7	15- 20	17.50	41.21
25.0	99.06	102.0	103.4	101.7	98.93	96.41	94.70	96.02	20- 25	21.32	62.54
30.0	93.67	96.74	99.83	96.96	93.41	90.33	89.31	90.14	25- 30	24.46	87.00
35.0	87.77	91.22	93.41	92.08	87.51	84.00	81.99	84.31	30- 35	26.82	113.8
40.0	80.84	85.41	87.00	86.85	80.58	77.53	74.68	78.23	35- 40	28.23	142.0
45.0	73.65	78.27	80.58	79.07	73.52	69.95	67.36	70.30	40- 45	28.75	170.8
50.0	66.46	70.97	74.16	71.19	66.34	62.27	60.05	62.25	45- 50	28.46	199.2
55.0	59.02	64.12	66.85	63.54	59.02	55.00	49.08	54.30	50- 55	27.38	226.6
60.0	51.84	57.16	59.54	56.22	51.84	47.76	38.11	46.30	55- 60	25.41	252.0
65.0	44.65	49.10	52.22	48.75	44.65	38.72	27.13	37.94	60- 65	22.77	274.8
70.0	37.59	41.36	44.91	41.64	37.59	30.18	16.16	30.18	65- 70	19.63	294.4
75.0	31.18	33.89	37.59	34.84	31.56	22.02	15.39	22.77	70- 75	16.49	310.9
80.0	26.30	27.73	30.28	28.55	26.43	19.26	14.62	19.94	75- 80	14.06	325.0
85.0	18.73	21.90	22.96	22.44	18.73	17.11	13.85	17.47	80- 85	11.78	336.8
90.0	14.11	16.16	15.65	16.42	14.11	14.88	13.08	14.88	85- 90	9.412	346.2
95.0									90- 95		
100.0									95-100		
105.0									100-105		
110.0									105-110		
115.0									110-115		
120.0									115-120		
125.0									120-125		
130.0									125-130		
135.0									130-135		
140.0									135-140		
145.0									140-145		
150.0									145-150		
155.0									150-155		
160.0									155-160		
165.0									160-165		
170.0									165-170		
175.0									170-175		
180.0									175-180		
DEG	LUMINOUS INTENSITY:cd									UNIT:lm	

Test System:HOPPO HPG1900
 Temperature:25.3DEG
 Operators:
 Test Date:2020年11月07日

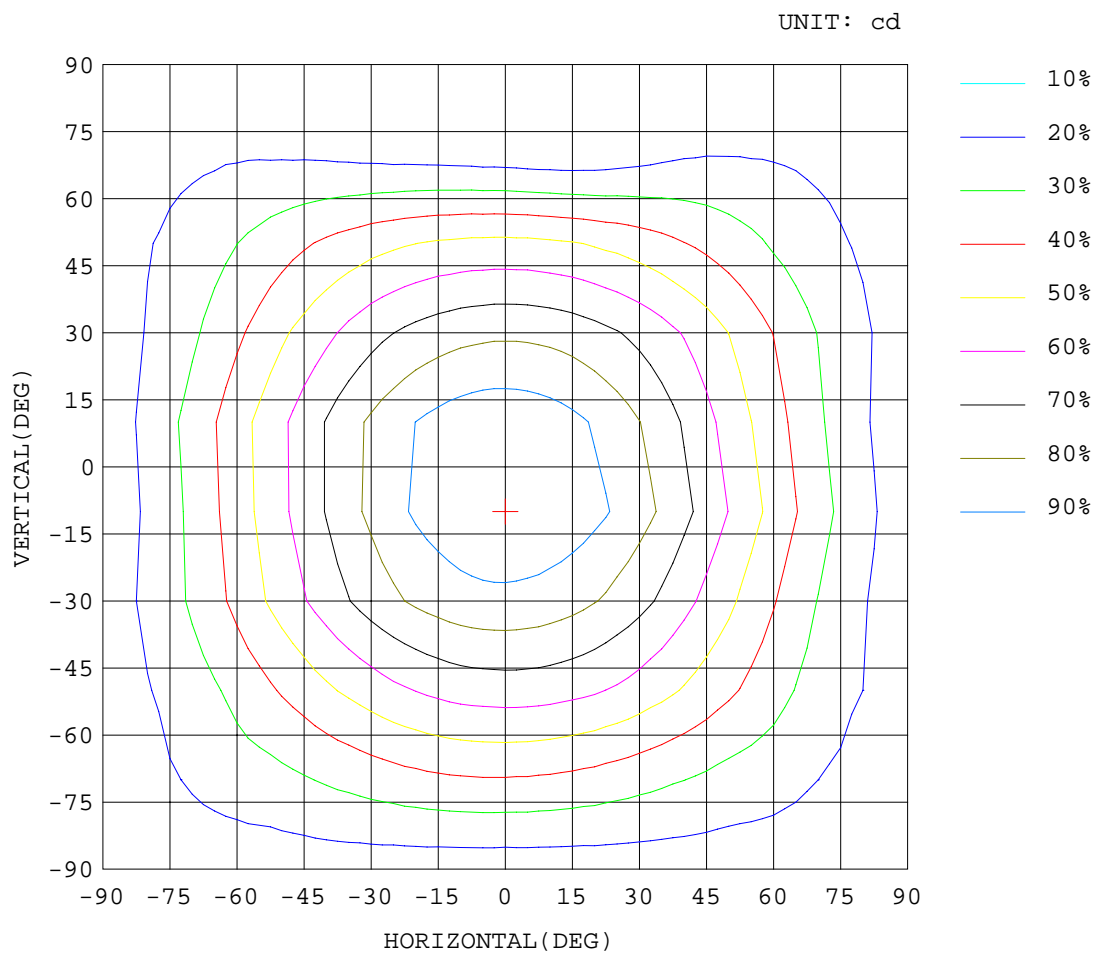
Test Set: 5.0deg/s B-Beta (TYPE B)
 Humidity:65.0%
 Test Distance:16.020 m
 Remarks:

HONGPU GONIOPHOTOMETERS SYSTEM TEST REPORT

ISOCANDELA DIAGRAM

Report number:

MANUFACTURER:	Address:	
NAME: LXD0940-7	TYPE:	WEIGHT:
SPECIFICATION:	DIMENSION:	SERIAL No.:



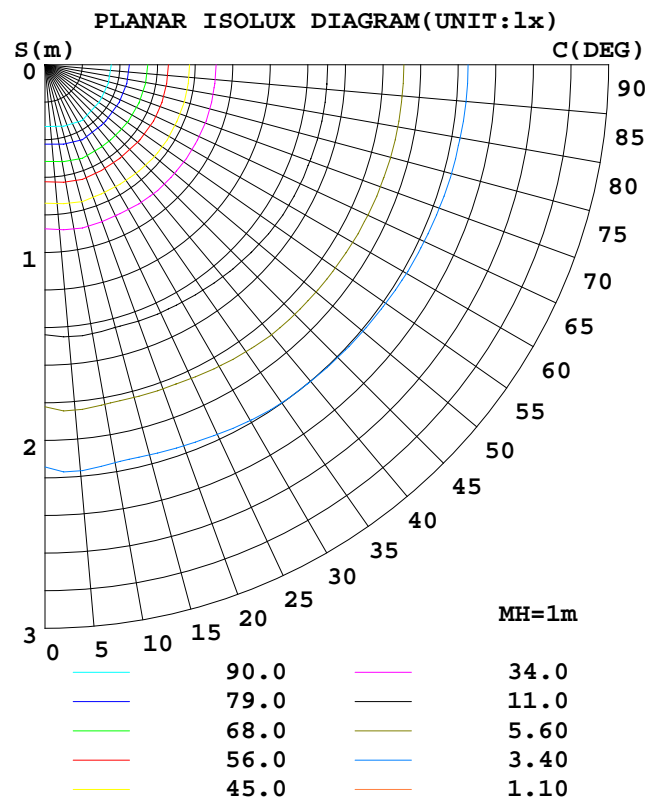
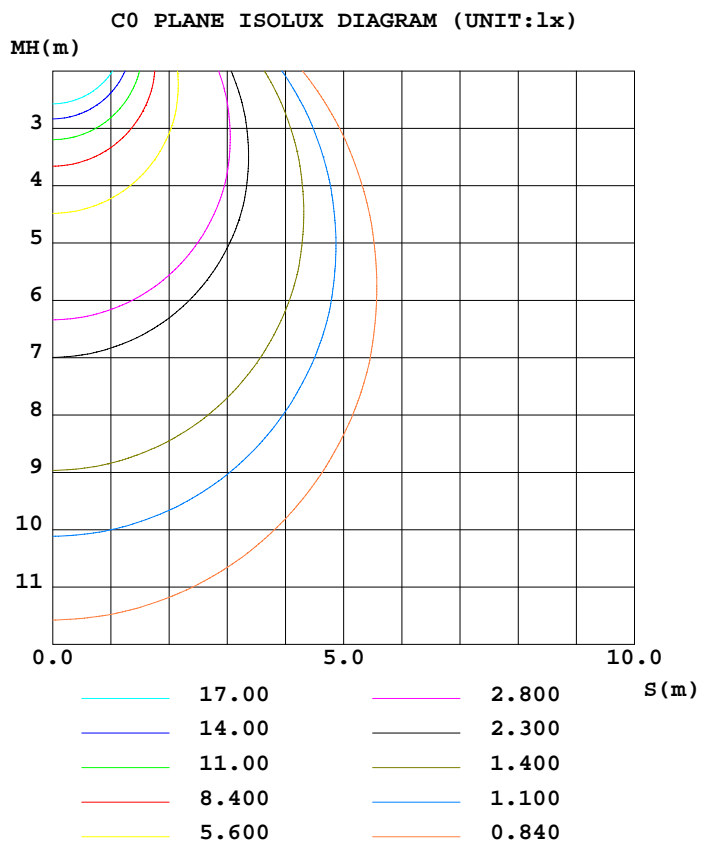
Test System:HOP00 HPG1900
Temperature:25.3DEG
Operators:
Test Date:2020年11月07日

Test Set: 5.0deg/s B-Beta (TYPE B)
Humidity:65.0%
Test Distance:16.020 m
Remarks:

ISOLUX DIAGRAM

Report number:

MANUFACTURER:	Address:	
NAME: LXD0940-7	TYPE:	WEIGHT:
SPECIFICATION:	DIMENSION:	SERIAL No.:



Test System:HOP00 HPG1900
Temperature:25.3DEG
Operators:
Test Date:2020年11月07日

Test Set: 5.0deg/s B-Beta (TYPE B)
Humidity:65.0%
Test Distance:16.020 m
Remarks:

HONGPU GONIOPHOTOMETERS SYSTEM TEST REPORT

LUMINOUS DISTRIBUTION INTENSITY DATA

Report number:

MANUFACTURER:	Address:	
NAME: LXD0940-7	TYPE:	WEIGHT:
SPECIFICATION:	DIMENSION:	SERIAL No.:

UNIT: cd

C (DEG) γ (DEG)	0	5	10	15	20	25	30	35	40	45	50	55	60	65	70
0.0	113	113	113	113	113	113	113	113	113	113	113	113	113	113	113
5.0	112	112	112	112	112	112	112	113	113	113	113	113	113	113	113
10.0	110	110	110	111	111	111	112	112	112	113	113	113	113	114	114
15.0	107	108	108	108	109	110	110	111	111	111	111	111	111	111	111
20.0	104	104	105	105	106	107	108	107	107	107	107	107	107	107	107
25.0	99.0	99.6	100	101	103	103	102	102	102	102	102	102	102	102	103
30.0	93.6	94.4	95.4	96.6	97.2	96.7	96.4	96.3	96.6	96.7	97.0	97.4	97.9	98.3	98.6
35.0	87.7	88.6	89.9	91.3	90.6	90.2	90.2	90.3	90.6	91.2	91.9	92.5	92.7	92.8	92.9
40.0	80.8	81.9	83.6	84.0	83.6	83.4	83.6	84.1	84.9	85.4	85.4	85.8	86.0	86.2	86.4
45.0	73.6	74.9	76.9	76.1	75.7	75.9	76.6	77.6	77.9	78.2	78.6	78.9	79.4	79.8	79.9
50.0	66.4	67.9	68.9	68.2	68.1	68.5	69.3	69.7	70.4	70.9	71.7	72.3	72.9	73.3	73.6
55.0	59.0	60.7	61.0	60.4	60.7	61.3	61.5	62.3	63.1	64.1	64.7	65.8	66.2	66.4	66.4
60.0	51.8	53.9	53.2	52.9	53.2	53.6	54.5	55.3	56.3	57.1	57.3	57.7	58.2	58.5	58.7
65.0	44.6	46.6	45.3	45.3	45.9	46.6	47.7	48.6	48.8	49.1	49.4	49.7	50.3	50.6	51.1
70.0	37.5	38.9	37.7	38.1	39.0	40.3	40.6	40.7	41.0	41.3	41.5	42.0	42.5	42.8	43.5
75.0	31.1	31.7	31.2	32.3	32.9	33.4	33.6	33.4	33.4	33.8	34.2	34.8	35.3	35.8	36.4
80.0	26.3	25.8	26.7	26.9	26.7	27.1	27.3	27.1	27.1	27.7	28.1	28.4	28.8	29.2	29.6
85.0	18.7	19.9	19.0	20.5	21.0	21.4	21.7	21.6	21.5	21.9	22.1	22.2	22.4	22.6	22.9
90.0	14.1	15.3	15.9	15.9	15.9	15.9	16.1	16.1	16.1	16.1	16.1	16.1	16.1	16.1	16.1

Test System:HOPPO HPG1900
 Temperature:25.3DEG
 Operators:
 Test Date:2020年11月07日

Test Set: 5.0deg/s B-Beta (TYPE B)
 Humidity:65.0%
 Test Distance:16.020 m
 Remarks:

HONGPU GONIOPHOTOMETERS SYSTEM TEST REPORT

LUMINOUS DISTRIBUTION INTENSITY DATA

Report number:

MANUFACTURER:	Address:		
NAME: LXD0940-7	TYPE:	WEIGHT:	
SPECIFICATION:	DIMENSION:	SERIAL No.:	

UNIT: cd

C (DEG) γ (DEG)	75	80	85	90	95	100	105	110	115	120	125	130	135	140	145
0.0	113	113	113	113	113	113	113	113	113	113	113	113	113	113	113
5.0	113	113	113	113	113	113	113	113	113	113	113	113	113	113	113
10.0	114	114	114	114	114	114	114	114	113	113	113	113	112	112	112
15.0	111	111	111	111	111	111	111	111	110	110	110	111	111	110	110
20.0	107	107	107	107	107	107	107	107	107	107	106	106	106	106	106
25.0	103	103	103	103	103	103	103	103	103	102	102	102	102	102	101
30.0	99.1	99.3	99.6	99.8	99.8	99.8	99.6	99.3	98.8	98.3	97.9	97.4	96.9	96.4	96.0
35.0	93.0	93.1	93.2	93.4	93.4	93.4	93.5	93.5	93.4	93.6	93.7	92.9	92.0	91.3	90.5
40.0	86.6	86.8	86.8	87.0	86.9	86.9	86.9	86.7	86.5	86.5	86.5	86.6	86.8	86.1	84.9
45.0	80.2	80.4	80.5	80.5	80.4	80.4	80.3	79.9	79.7	79.4	79.2	79.1	79.0	79.1	79.1
50.0	73.8	74.1	74.1	74.1	73.9	73.9	73.6	73.2	72.7	72.3	71.9	71.5	71.1	70.9	70.9
55.0	66.5	66.7	66.8	66.8	66.6	66.6	66.5	66.0	65.6	65.3	64.6	63.9	63.5	63.1	62.9
60.0	59.0	59.2	59.4	59.5	59.4	59.3	59.1	58.7	58.2	57.8	57.1	56.5	56.2	55.6	55.0
65.0	51.4	51.8	52.1	52.2	52.2	52.1	51.9	51.5	51.0	50.4	49.7	49.2	48.7	48.1	47.6
70.0	43.9	44.3	44.7	44.9	45.0	44.8	44.7	44.2	43.8	43.2	42.6	42.2	41.6	41.0	40.6
75.0	36.8	37.2	37.5	37.5	37.7	37.6	37.4	37.1	36.7	36.3	35.7	35.3	34.8	34.3	33.9
80.0	29.8	30.1	30.3	30.2	30.4	30.3	30.2	30.1	29.8	29.6	29.2	29.0	28.5	28.1	28.0
85.0	22.8	23.0	23.1	22.9	23.1	23.1	23.0	23.1	22.9	23.0	22.9	22.8	22.4	22.2	22.0
90.0	15.9	15.9	15.9	15.6	15.9	15.9	15.9	16.1	16.1	16.4	16.6	16.6	16.4	16.4	16.1

Test System:HOP00 HPG1900
 Temperature:25.3DEG
 Operators:
 Test Date:2020年11月07日

Test Set: 5.0deg/s B-Beta (TYPE B)
 Humidity:65.0%
 Test Distance:16.020 m
 Remarks:

HONGPU GONIOPHOTOMETERS SYSTEM TEST REPORT

LUMINOUS DISTRIBUTION INTENSITY DATA

Report number:

MANUFACTURER:	Address:		
NAME: LXD0940-7	TYPE:	WEIGHT:	
SPECIFICATION:	DIMENSION:	SERIAL No.:	

UNIT: cd

C (DEG) γ (DEG)	150	155	160	165	170	175	180	185	190	195	200	205	210	215	220
0.0	113	113	113	113	113	113	113	113	113	113	113	113	113	113	113
5.0	112	112	112	112	112	112	112	112	112	112	112	112	112	112	112
10.0	111	111	111	111	110	110	110	110	110	110	110	110	110	110	110
15.0	109	109	108	108	108	107	107	107	107	107	107	107	108	108	108
20.0	107	106	105	105	104	104	104	104	104	104	104	104	105	104	103
25.0	101	101	101	100	99.6	99.1	98.9	98.8	99.0	99.3	99.8	99.4	98.5	97.7	97.0
30.0	95.7	95.5	95.5	95.0	94.1	93.6	93.4	93.4	93.8	94.4	94.3	93.1	92.0	91.2	90.7
35.0	89.8	89.3	89.2	89.3	88.4	87.7	87.5	87.6	88.0	88.7	87.3	86.1	85.3	84.8	84.3
40.0	83.9	83.0	82.5	82.2	81.6	80.8	80.5	80.8	81.6	81.1	79.8	78.9	78.3	77.9	77.8
45.0	77.7	76.3	75.3	74.7	74.4	73.6	73.5	74.0	74.9	73.2	72.0	71.3	70.9	71.0	70.3
50.0	71.1	69.9	68.5	67.6	67.2	66.6	66.3	66.7	66.9	65.4	64.5	63.9	63.6	62.9	62.6
55.0	62.8	63.2	62.0	60.6	59.8	59.2	59.0	59.6	59.1	57.7	57.0	56.6	55.9	55.5	55.2
60.0	54.9	55.0	55.4	53.9	52.6	51.9	51.8	52.8	51.3	50.0	49.4	49.0	48.7	48.4	48.2
65.0	47.2	46.9	47.2	47.4	45.6	44.7	44.6	45.6	43.7	42.7	42.2	41.8	41.9	41.6	40.2
70.0	40.0	39.6	39.1	39.6	39.2	37.6	37.5	38.0	36.3	35.7	35.6	35.6	34.7	33.5	31.9
75.0	34.0	33.2	32.3	32.3	32.8	31.6	31.5	31.4	29.9	30.0	29.5	28.8	27.7	26.1	24.1
80.0	28.4	28.1	27.3	26.7	26.7	27.3	26.4	25.5	25.4	24.9	23.7	22.7	21.5	20.7	19.9
85.0	22.2	22.2	22.0	21.7	19.8	19.9	18.7	19.6	18.5	19.1	19.0	18.7	18.4	18.1	17.4
90.0	16.1	16.1	16.1	15.9	15.9	15.6	14.1	14.8	15.3	15.3	15.6	15.3	15.3	15.3	14.8

Test System:HOPPO HPG1900
Temperature:25.3DEG
Operators:
Test Date:2020年11月07日

Test Set: 5.0deg/s B-Beta (TYPE B)
Humidity:65.0%
Test Distance:16.020 m
Remarks:

HONGPU GONIOPHOTOMETERS SYSTEM TEST REPORT

LUMINOUS DISTRIBUTION INTENSITY DATA

Report number:

MANUFACTURER:	Address:		
NAME: LXD0940-7	TYPE:	WEIGHT:	
SPECIFICATION:	DIMENSION:	SERIAL No.:	

UNIT: cd

C (DEG) γ (DEG)	225	230	235	240	245	250	255	260	265	270	275	280	285	290	295
0.0	113	113	113	113	113	113	113	113	113	113	113	113	113	113	113
5.0	112	112	112	112	112	112	112	112	112	112	112	112	112	112	112
10.0	110	110	111	111	111	111	111	111	111	111	111	111	111	111	110
15.0	108	107	107	107	106	106	106	106	106	105	105	106	106	106	106
20.0	102	102	101	101	101	100	100	100	100	100	100	100	100	100	100
25.0	96.4	95.9	95.5	95.2	95.1	94.8	94.7	94.7	94.7	94.7	94.7	94.7	94.8	94.9	95.1
30.0	90.3	89.9	89.6	89.4	89.3	89.4	89.2	89.2	89.4	89.3	89.4	89.4	89.4	89.6	89.7
35.0	84.0	83.8	83.7	83.2	82.8	82.5	82.2	82.0	82.0	81.9	82.0	82.1	82.3	82.7	83.1
40.0	77.5	76.8	76.3	75.8	75.5	75.1	75.0	74.7	74.7	74.6	74.6	74.7	74.9	75.2	75.5
45.0	69.9	69.4	68.9	68.5	68.2	67.9	67.6	67.5	67.3	67.3	67.3	67.3	67.4	67.6	67.9
50.0	62.2	62.0	61.6	61.3	61.0	60.8	60.3	60.3	60.0	60.0	59.9	59.8	59.9	60.1	60.2
55.0	55.0	54.7	54.5	53.5	52.4	51.4	50.4	49.8	49.2	49.0	48.9	49.0	49.4	50.3	51.1
60.0	47.7	46.2	45.0	43.4	42.2	41.0	39.8	39.1	38.3	38.1	37.8	37.9	38.4	39.3	40.4
65.0	38.7	37.0	35.2	33.6	32.1	30.6	29.4	28.4	27.4	27.1	26.7	26.8	27.3	28.4	30.0
70.0	30.1	28.0	25.8	23.9	21.9	20.3	18.9	17.7	16.5	16.1	15.6	15.7	16.2	17.6	19.8
75.0	22.0	20.2	19.1	18.3	17.6	17.1	16.6	16.2	15.6	15.3	14.9	14.7	14.5	14.9	15.8
80.0	19.2	18.3	17.5	16.8	16.2	15.9	15.4	15.2	14.7	14.6	14.3	14.2	14.1	14.4	15.1
85.0	17.1	16.2	15.7	15.2	14.9	14.6	14.2	14.3	13.9	13.8	13.8	13.7	13.7	13.8	14.2
90.0	14.8	14.1	13.8	13.6	13.6	13.3	13.0	13.3	13.0	13.0	13.3	13.3	13.3	13.3	13.3

Test System:HOPPO HPG1900
 Temperature:25.3DEG
 Operators:
 Test Date:2020年11月07日

Test Set: 5.0deg/s B-Beta (TYPE B)
 Humidity:65.0%
 Test Distance:16.020 m
 Remarks:

HONGPU GONIOPHOTOMETERS SYSTEM TEST REPORT

LUMINOUS DISTRIBUTION INTENSITY DATA

Report number:

MANUFACTURER:	Address:	
NAME: LXD0940-7	TYPE:	WEIGHT:
SPECIFICATION:	DIMENSION:	SERIAL No.:

UNIT: cd

C (DEG) γ (DEG)	300	305	310	315	320	325	330	335	340	345	350	355
0.0	113	113	113	113	113	113	113	113	113	113	113	113
5.0	112	112	112	112	112	112	112	112	112	112	112	112
10.0	110	110	110	110	110	110	110	110	110	110	110	110
15.0	106	106	107	107	108	107	107	107	107	107	107	107
20.0	101	101	101	102	102	103	104	103	103	103	103	103
25.0	95.2	95.4	95.7	96.0	96.4	96.9	97.5	98.3	98.6	98.5	98.4	98.6
30.0	89.7	89.8	89.9	90.1	90.3	90.8	91.3	92.0	92.9	93.1	93.0	93.2
35.0	83.6	84.2	84.2	84.3	84.4	84.6	85.0	85.5	86.2	87.2	87.0	87.2
40.0	75.9	76.4	77.3	78.2	78.5	78.5	78.5	78.7	79.1	79.7	80.1	80.2
45.0	68.2	68.7	69.4	70.3	71.3	72.3	71.9	71.8	71.8	72.1	72.8	72.9
50.0	60.4	61.0	61.5	62.2	63.0	63.9	65.3	65.2	64.8	64.7	65.3	65.7
55.0	52.4	53.2	53.6	54.3	54.8	55.8	57.0	58.3	58.0	57.6	57.7	58.2
60.0	42.1	43.6	45.1	46.3	47.1	48.0	48.9	50.0	51.2	50.7	50.5	50.8
65.0	32.1	34.2	36.3	37.9	39.3	40.4	41.2	42.1	43.1	44.2	43.5	43.6
70.0	22.5	25.2	27.9	30.1	31.9	33.1	34.0	34.6	35.4	36.6	37.0	36.5
75.0	17.2	18.9	20.8	22.7	24.8	26.3	27.5	28.1	28.6	29.6	30.8	30.5
80.0	16.1	17.4	18.8	19.9	20.6	21.2	21.7	22.7	23.3	23.9	24.8	26.2
85.0	14.9	15.7	16.6	17.4	18.0	18.4	18.8	19.0	19.1	19.1	18.6	19.3
90.0	13.6	13.8	14.3	14.8	15.3	15.6	15.9	15.9	15.9	15.6	15.3	14.8

Test System:HOP00 HPG1900
 Temperature:25.3DEG
 Operators:
 Test Date:2020年11月07日

Test Set: 5.0deg/s B-Beta (TYPE B)
 Humidity:65.0%
 Test Distance:16.020 m
 Remarks: